



MODULAR 4-WAY AMPLIFIED PILOT VALVES

R-471



4-Way Amplified Pilot Valve

Features:

- Micro gap construction - snap action and no blow by
- Clippard 3200 bleed type amplifier section assures long life and repeatability
- Standard octoport plug-in design

Performance:

Flow: 9 scfm @ 100 psig; 255 l/min @ 6.9 bars

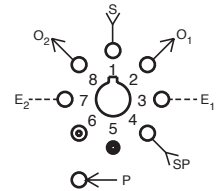
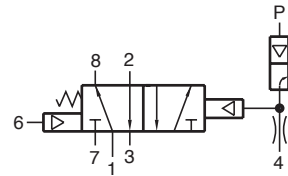
Pilot Pressure (psig) Minimum: 8" H₂O on 1" H₂O off

Pilot Supply Pressure: 45 to 100 psig; 3.1 to 6.9 bars

Temperature: 32 to 180°F

Working Pressure: 0 to 150 psig; 0 to 10.3 bars

Bleed Flow (amplifier orifice): 0.010" (0.25)



Description:

R-471 is a 4-way, fully ported, spring return, amplified pilot valve. The R-471 is a hybrid combination of the R-401 and model 3200 snap action valve.

R-472



4-Way Interface Valve

Features:

- Micro gap construction - snap action and no blow by
- Clippard 3200 bleed type amplifier section assures long life and repeatability
- Standard octoport plug-in design

Performance:

Flow: 9 scfm @ 100 psig; 255 l/min @ 6.9 bars

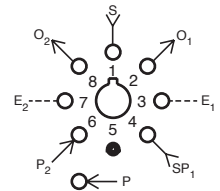
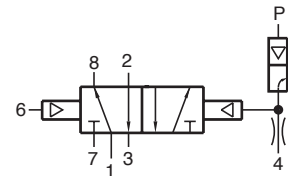
Pilot pressure (psig) Minimum: 8" H₂O on 1" H₂O off

Pilot Supply Pressure: 45 to 100 psig; 3.1 to 6.9 bars

Temperature: 32 to 180°F

Working Pressure: 0 to 150 psig; 0 to 10.3 bars

Bleed Flow (amplifier orifice): 0.010" (0.25)



Description:

R-472 is a 4-way, fully ported, two position, amplified pilot valve. R-472 is a hybrid combination of the R-402 and model 3200 snap action valve.